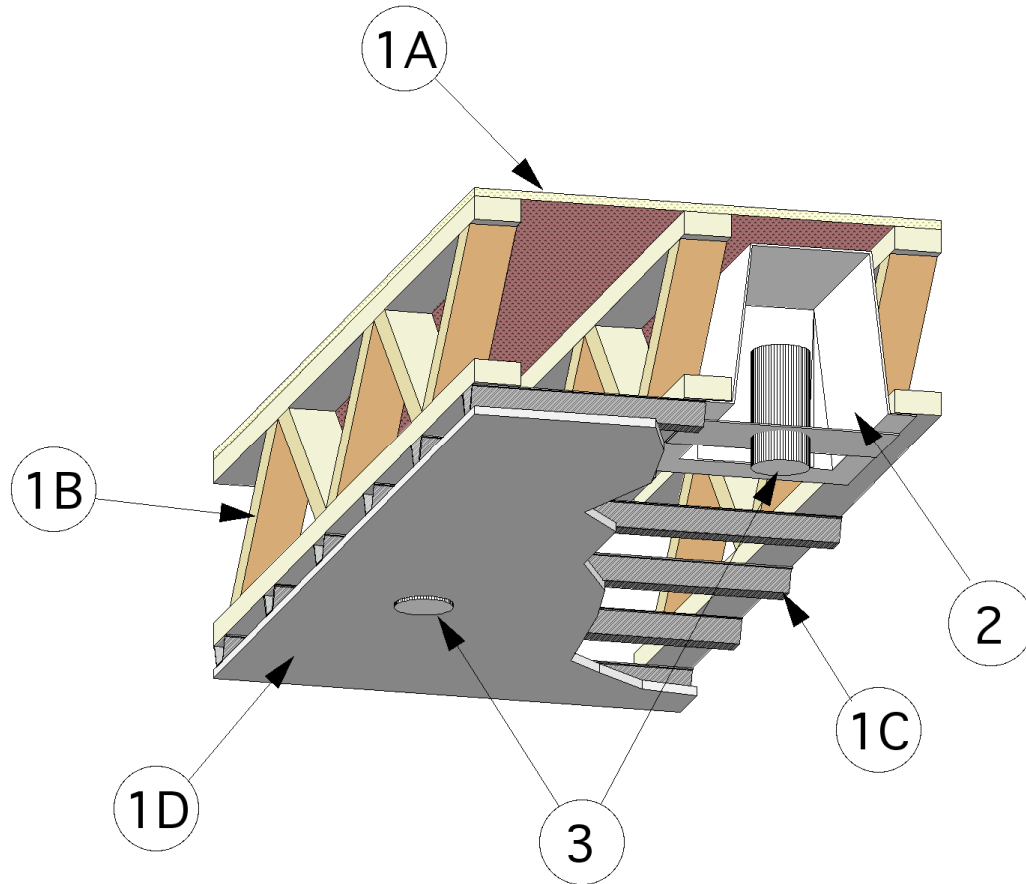


---

Design Number EZB/FME 60-02  
NON LOAD BEARING FLOOR / CEILING  
E.Z. Barrier, LLC Inc.  
E.Z. Barrier™ EZB 16-24-9 Fire Rated Enclosure  
ASTM E 119  
F Rating: 1 Hour

---



1. FLOOR CEILING ASSEMBLY:  
Constructed in the manner as specified  
below:

- A. Plywood subfloor: Nominal 23/32 inch thick interior grade plywood with tongue-and-groove edges along the 8 foot sides. Long dimension of panels, or face grain of plywood, to be perpendicular to trusses with joints staggered. Plywood is secured to top side of

truss assembly (Item 1B) with No. 6d common nails spaced maximum 12 inches OC.

- B. Trusses: Parallel chord trusses spaced a maximum of 24 inches OC fabricated of nominal 2 inches x 4 inches lumber with lumber oriented vertically or horizontally. Truss members are secured with No. 20 MSG galvanized steel truss plates.

Date Revised: January 29, 2010  
Project No: G100014748SAT-005B

©Intertek

- C. Resilient Channels: Formed from nominal 26 GA galvanized steel, spaced 16 inches OC and applied perpendicular to the trusses. Channel is secured to the trusses with 1-1/4 inch long steel wood screws. Channel overlapped at splices a minimum of 4 inches. Channel is removed in locations where the recessed light cover (Item 2) is located.
- D. Gypsum Board: Nominal 5/8 inch Type X gypsum board secured to the underside of the resilient channel (Item 1C) with 1 inch long wallboard screws spaced max 12 inches OC and located 1-1/2 inches from side and end joints. Apply vinyl or casein, dry or premixed joint compound to face layers of gypsum board in two coats to all exposed fastener heads and gypsum board joints. A minimum 2 inch wide paper, plastic, or fiberglass tape is embedded in first layer of compound over joints in gypsum wallboard.
2. CERTIFIED MANUFACTURER: E.Z. Barrier, Inc
- CERTIFIED PRODUCT: Formed Metal Fabrications
- MODEL: E.Z. Barrier™ EZB 16-24-9 Fire Rated Enclosure
- RECESSED LIGHT COVER: Constructed of nominal 24 GA galvanized steel and having nominal dimensions 20 inch long x 12 inch wide x 9-1/2 inch deep and having nominal 2-1/2 inch wide flanges. Position the box inverted and recessed into the floor cavity. Secure the flanges of the box to the underside of the truss assembly (Item 1B) with No. 6, 1-1/4 inch long bugle head screws spaced at pre-drilled locations on the flanges. The boxes may be installed in the floor with the following provisions:
- Maximum 2 fixtures within 36 square foot area.
  - Minimum OC fixture spacing of 24 inches within same truss cavity.
  - Minimum center-to-center fixture spacing of 34 inches for adjacent truss cavities.
3. RECESSED LIGHT FIXTURE: Standard canister-style recessed light assembly installed in accordance with manufacturer's instructions. Standard 3C-12AWG "Romex" wire is fixed to the assembly and exits the recessed light cover (Item 2) through a maximum of two openings.
4. FILL, VOID, OR CAVITY MATERIAL: (Not shown) Use only fill, void, or cavity material certified by Intertek, bearing an Intertek label. Apply a bead of fill, void, or cavity material around the power supply wire where it exits the recessed light cover (Item 2).